

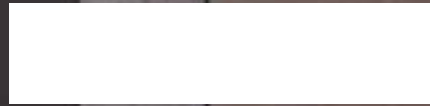
PowerWAVE 6000

(S3 60–120 kVA)

(6000 160–500 kVA)

Parallelable up to 5 MVA/MW

Technical Specification



PowerWAVE 6000 / PowerWAVE 6000 S3

General data	60 kVA	80 kVA	100 kVA	120 kVA	160 kVA	200 kVA	250 kVA	300 kVA	400 kVA	500 kVA	
Topology	True online double conversion										
Parallel configuration	Up to 10 units										
UPS type	Standalone										
Cable entry	Bottom front								Bottom front or top		
Input											
Nominal input voltage	3 × 380 / 220 V + N, 3 × 400 / 230 V + N, 3 × 415 / 240 V + N										
Voltage tolerance (ref. to 3 × 400 / 230 V)	For loads < 100% (-23%, +15%), < 80% (-30%, +15%), < 60% (-40%, +15%)										
Input distortion THDi	≤ 3.5% at 100%										
Frequency	35–70 Hz										
Power factor	0.99 at 100% load										
Output											
Output power max.	60 kW	80 kW	100 kW	120 kW	160 kW	200 kW	250 kW	300 kW	400 kW	500 kW	
Output power factor	1.0										
Rated output voltage	3 × 380 / 220 V + N, 3 × 400 / 230 V + N, 3 × 415 / 240 V + N										
Voltage distortion	< 2%										
Frequency	50 or 60 Hz										
Overload capability	10 min.: up to 125 % or 1 min.: up to 150%										
Unbalanced load	100% possible										
Crest factor	3:1										
Efficiency											
Overall efficiency	Up to 96%										
In eco-mode configuration	≥ 99%				98%						
Environment											
Storage temperature	-25–70 °C										
Operating temperature	0–40 °C										
Altitude configuration	1000 m without derating										
Battery											
Battery type	Maintenance-free VRLA or NiCd										
Communications											
Graphical display	Optional							Yes			
Standards											
Safety	IEC / EN 62040-1										
Electromagnetic compatibility (EMC)	IEC / EN 62040-2										
Performance	IEC / EN 62040-3										
Product certification	CE										
Protection rating	IP 20										
Manufacturing	ISO 9001, ISO 14001										
Weight/Dimensions for PowerWAVE 6000 S3 60–120 kVA											
Weight (without batteries)	230 kg	240 kg	245 kg	280 kg							
Dimensions (mm) W x D x H	615 x 480 x 1954			850 x 750 x 1820							
Weight/Dimensions for PowerWAVE 6000 160–500 kVA											
Weight (without batteries)					290 kg	310 kg	390 kg	410 kg	950 kg	1000 kg	
Dimensions (mm) W x D x H					850 x 750 x 1820		1100 x 750 x 1920		1650 x 850 x 1994		



**INVESTORS
IN PEOPLE**

Accredited
Until 2021



Constructionline
Gold Member



Accredited Contractor
CHAS.co.uk

KOHLER[®]POWER
uninterruptible

Woodgate, Bartley Wood Business Park,
Hook, Hampshire RG27 9XA

Tel: 01256 386700

Fax: 01256 386701

Email: uksales.ups@kohler.com

www.kohler-ups.co.uk